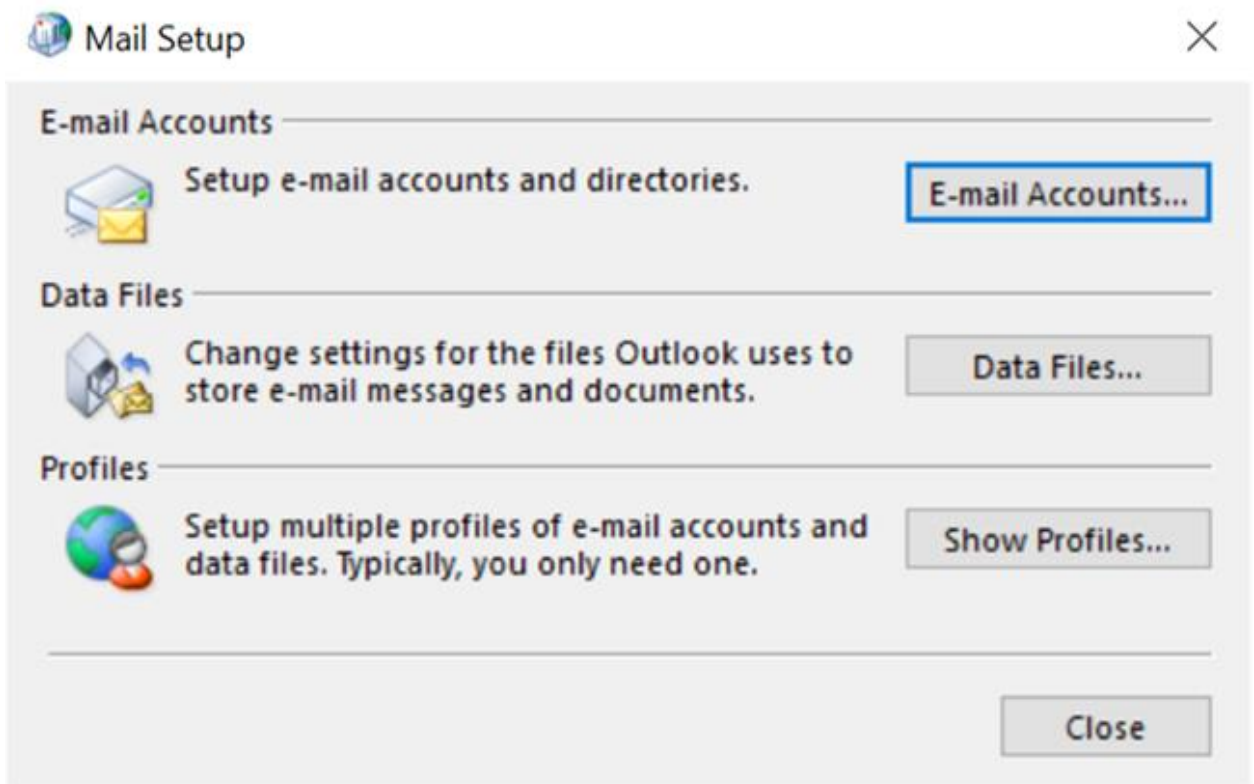


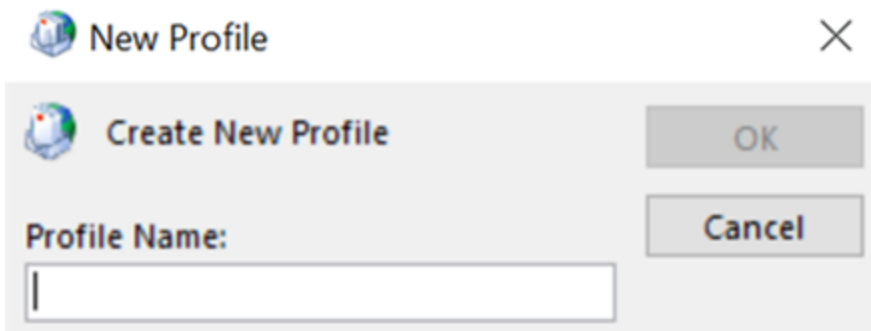
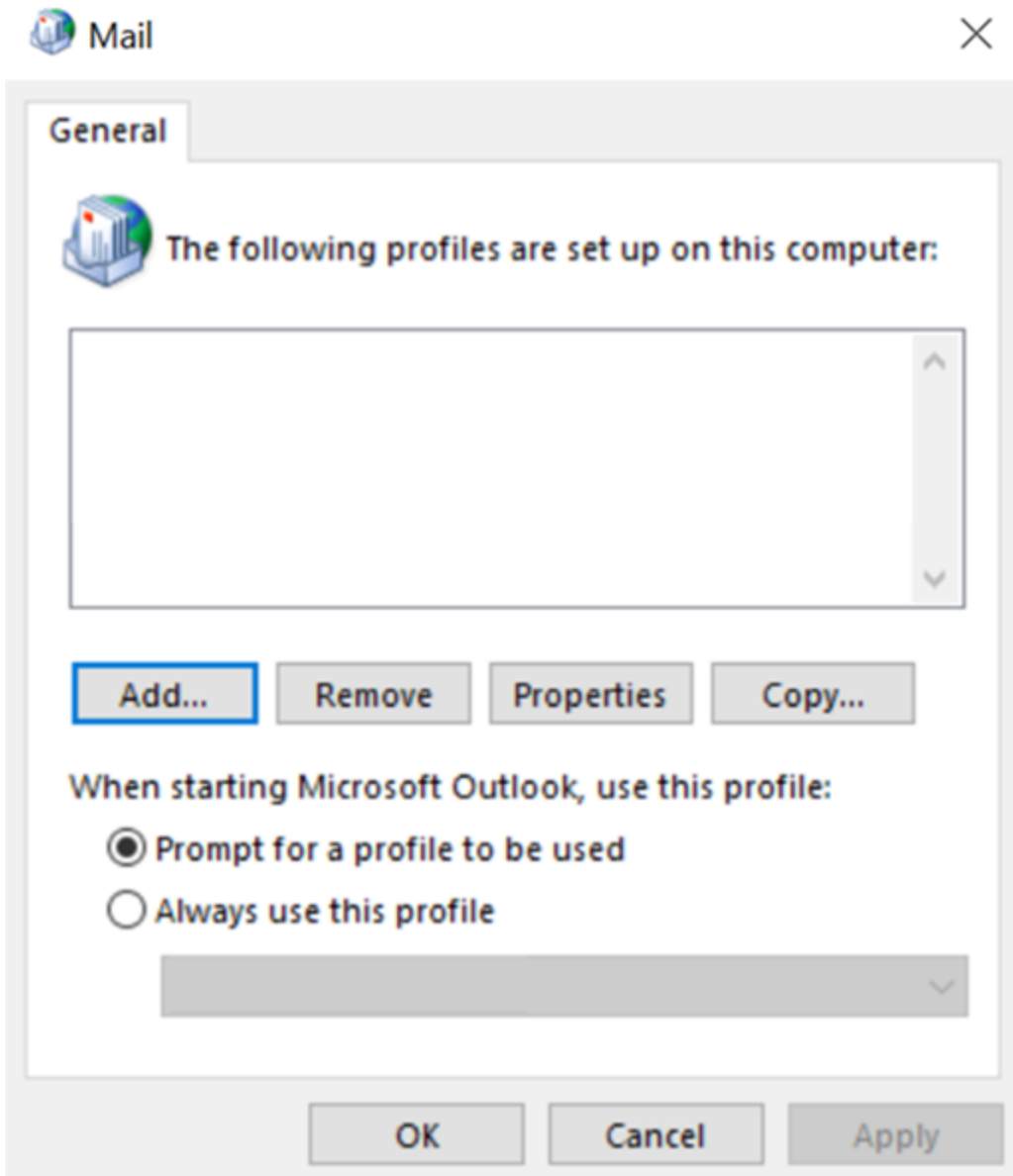
Windows: Outlook 2013 (IMAP)

This article will assist you with setting up Outlook 2013 with your Hosted Mailbox.

1. Click on the Start Menu (or press the Windows key) and then search for **Control Panel**
2. Once in the Control Panel, Click on **Mail**
3. When the Mail Control Panel opens, select **Show Profiles**



4. Select **Add** to add a new profile. Enter any name you wish and select **OK**



5. Select Manual setup or additional server types. Click Next

Add Account

Auto Account Setup
Manual setup of an account or connect to other server types.

E-mail Account

Your Name:
Example: Ellen Adams

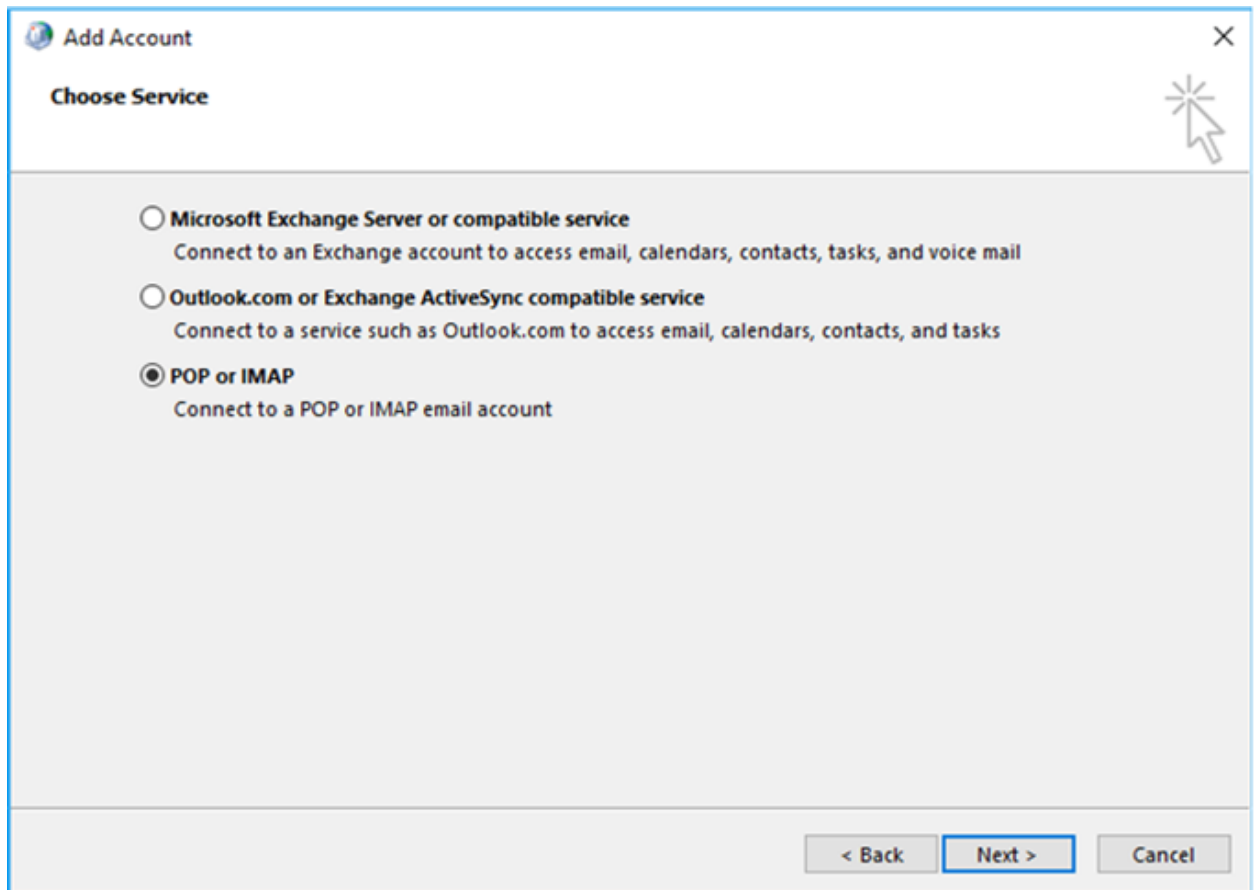
E-mail Address:
Example: ellen@contoso.com

Password:
Retype Password:
Type the password your Internet service provider has given you.

Manual setup or additional server types

< Back Next > Cancel

6. Select **POP or IMAP** and click **Next**



7. In the **Add New Account** window, input the following information:

Email Address: youremail@example.com

Account Type: IMAP

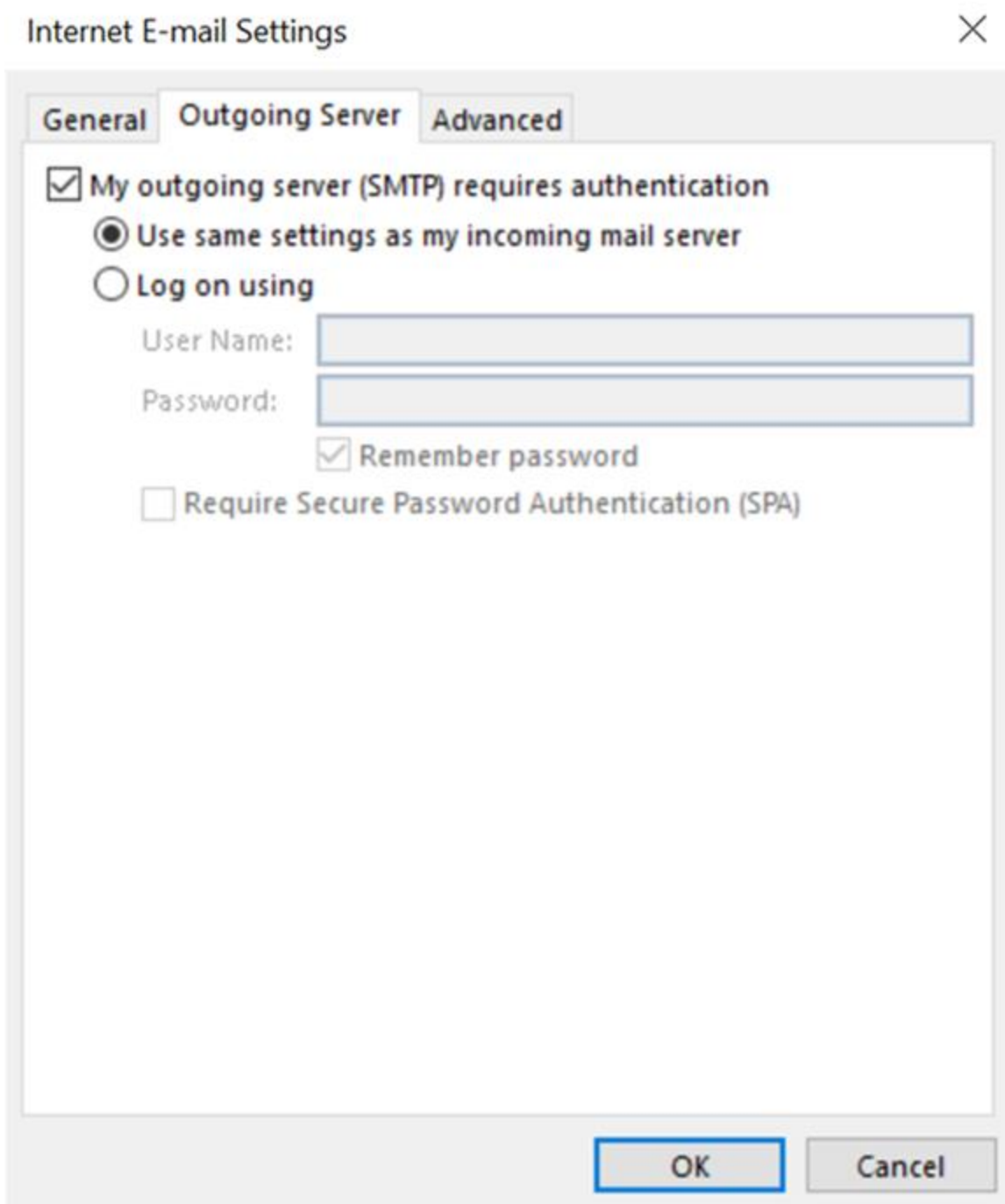
Incoming Mail Server: secure.emailsrvr.com

Outgoing Mail Server: secure.emailsrvr.com

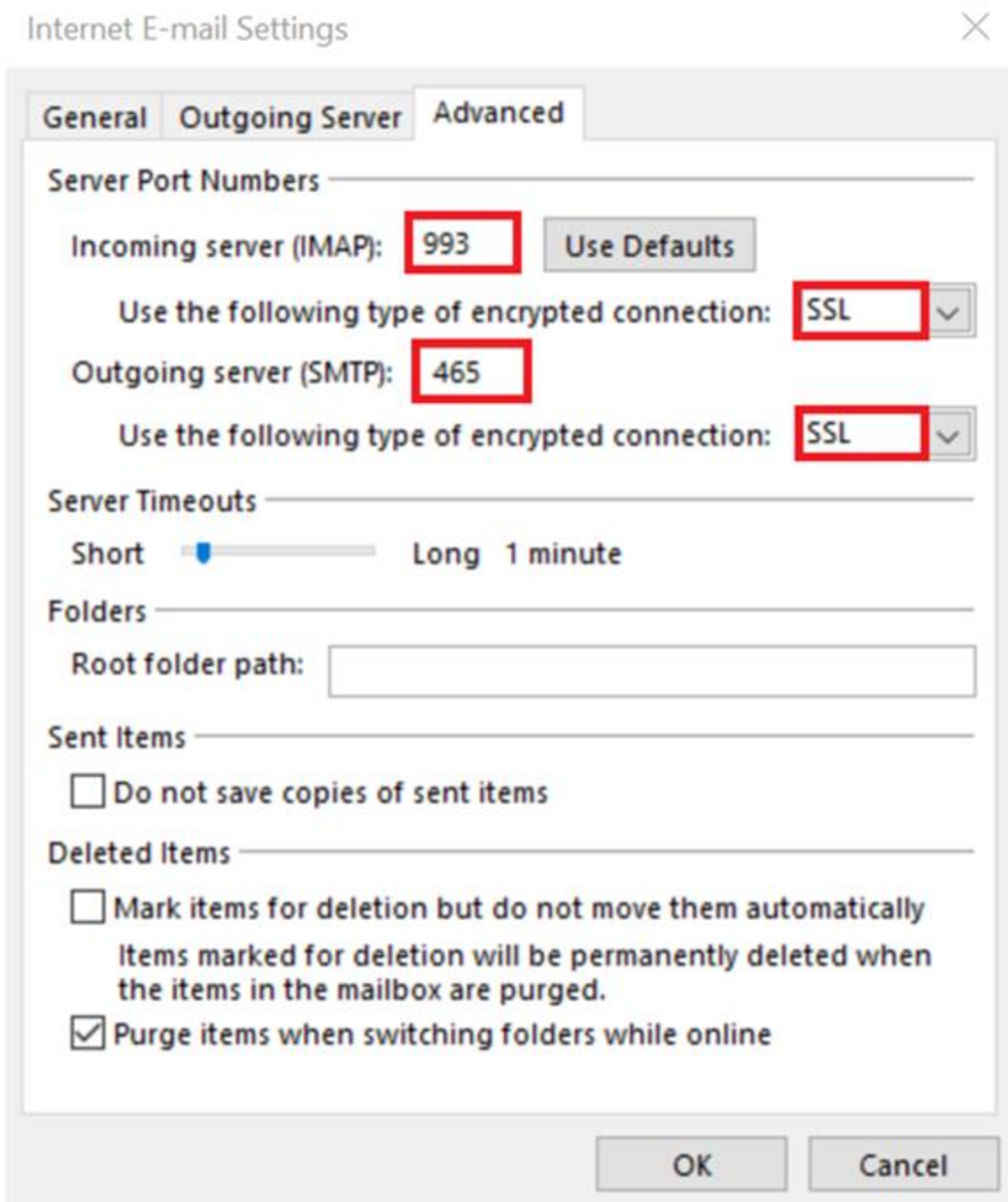
User Name: youremail@example.com

Password: Your mailbox password

8. Click on **More Settings** then click the **Outgoing Server Tab**
9. Check the box for **My outgoing server (SMTP) requires authentication**
Check the button for **Use same settings as my incoming mail server**

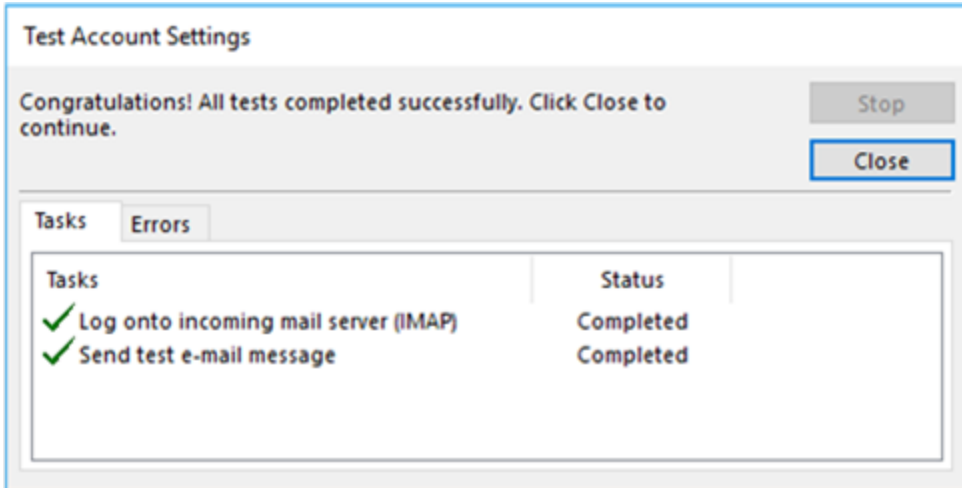


10. Change **Use the following type of encrypted connection** to **SSL**
Change the port numbers to match the image below.



11. Click **OK**

12. Click **Next**. Outlook will now attempt to send a test message using the settings we have just put in. If everything was entered correctly, the message will send out successfully.



13. **Congratulations!** You have now setup Outlook to work with your Mailbox. Please wait 15 minutes before troubleshooting to allow for mail to download.